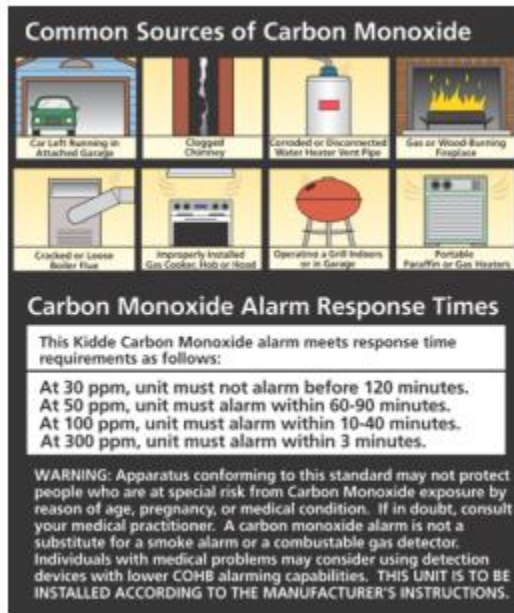


Caravan and Boating Advice Sheet

The following can lead to carbon monoxide being produced:

- **Using LPG cooking appliances for heating**
- **Leaving LPG appliances on overnight**
- **Barbecues within the boat cabin or near a caravan door (e.g. under an awning)**

To be safe, know the possible sources of carbon monoxide.



Ensure that fuel burning appliances and their chimneys and vents in good working condition. Learn the early symptoms of exposure, and if you suspect CO poisoning, move outside to fresh air, and get emergency help.

Your first line of defence is an annual inspection and regular maintenance of your appliances.

In addition to following CoGDEM (www.cogdem.org.uk) and National Caravan Council (NCC) guidelines;

- Do not install your CO alarm directly above a source of heat or steam.
- Avoid locating the alarm close to vehicle and exhaust fumes as these can damage the alarm sensor

Additional Information for boat owners;

- Avoid locating your CO alarm near engine exhaust gases in the accommodation space
- Avoid running the engine when moored alongside objects such as a wharf, a wall, or another boat
 - Avoid running your engine when docked in a crowded marina as vehicle and exhaust fumes can damage the alarm sensor.

For further information visit www.boatsafetyscheme.com